

# Impact of plastic pollution

RO

CNCH





## Impact on Environment

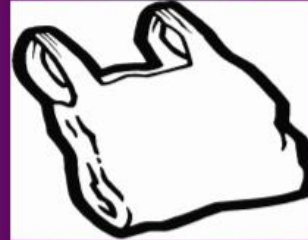


- Plastic is ubiquitous in our lives because it is convenient and relatively inexpensive.
- Its convenience comes from being lightweight and its ability to absorb impact shock without breaking.
- Plastics are so versatile in use that their impacts on environment are extremely wide ranging, posing serious challenge for disposal.

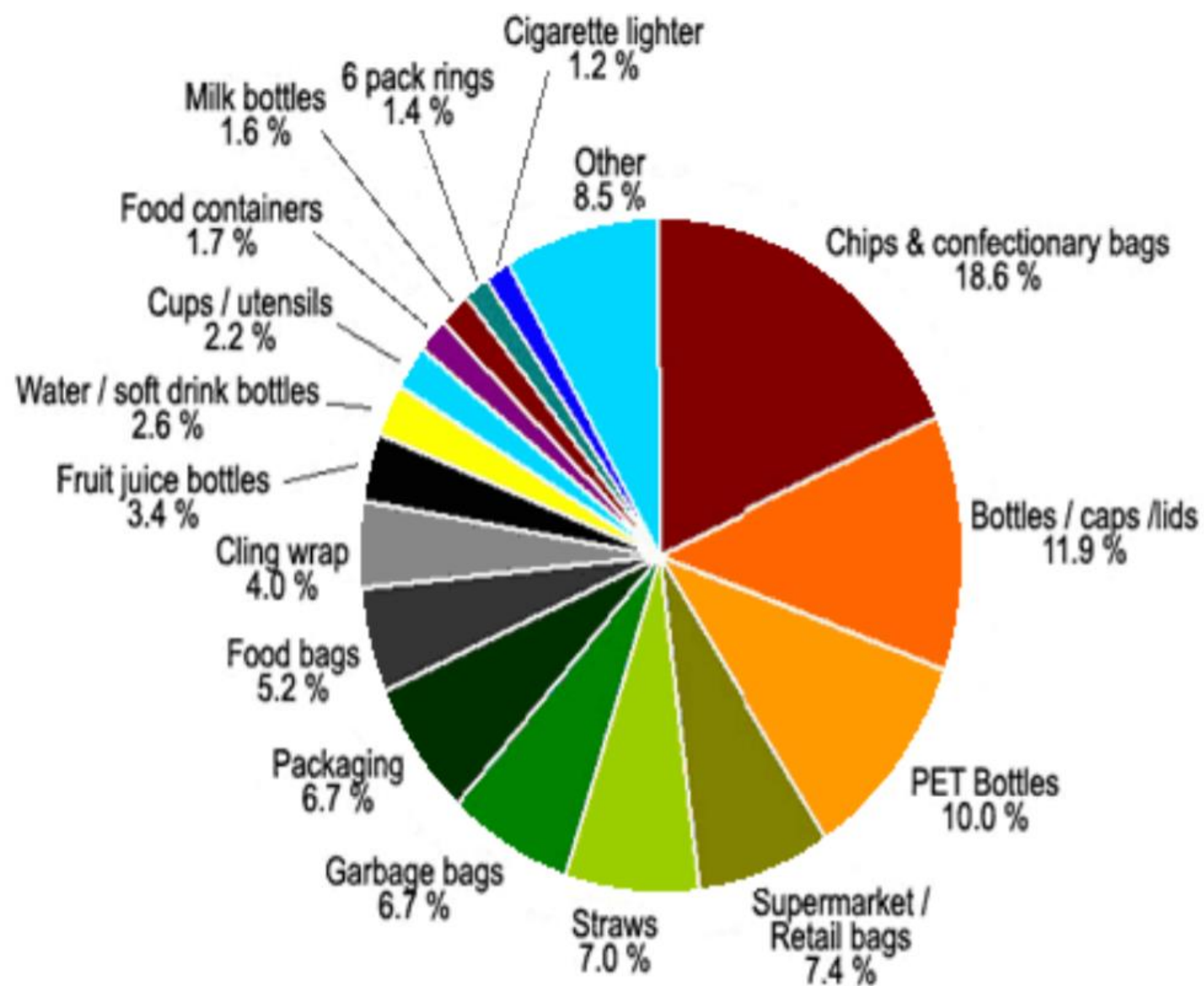
Careless disposal of plastic bags chokes drains, blocks the porosity of the soil, and causes problems for groundwater recharge. *Due to its non-biodegradable nature, littering of plastics causes irreversible damage to the environment.*

# TYPES OF PLASTIC PRODUCTS

- PLASTIC BAGS
- PLASTIC COATINGS
- PLASTIC FURNITURE
- PLASTIC SHEETS
- PLASTIC FITTINGS
- PLASTIC TANKS
- PLASTIC TOYS
- PLASTIC BUCKETS
- PLASTIC SANITARYWARE
- PLASTIC STATIONERY







## Plastics Consumption Worldwide

<u>MAIN WORLD AREAS</u>	<u>PLASTICS CONSUMPTION, 000S TONS</u>	<u>POPULATION (MILLIONS)</u>	<u>KG/CAPITA</u>	<u>GNI/CAPITA</u>
Europe W, C, E	40 000	450	90	18 000
Eurasia, Russia, others	4 000	285	14	1 600
North America	45 000	310	145	32 000
Latin America	11 000	500	22	3 500
Middle East, incl. TR	4 000	200	20	2 500
Africa, North & South	2 500	190	13	2 000
Other Africa	500	610	<1	300
China	19 000	1285	14	800
<b>India</b>	<b>4 000</b>	<b>1025</b>	<b>4</b>	<b>450</b>
Japan	11 000	125	90	35 000
Other Asia Pacific, rest	13 000	1120	11	600
<b>Total world</b>	<b>154 000</b>	<b>6 100</b>	<b>25</b>	<b>5 200</b>

## ***Why is there 'so much' Plastic Pollution??***

- We currently recover only 5% of the plastics we produce.
- Pollution exists today due to the society's lack of environmental awareness & the ease of simply littering plastics. 😞



# PLASTIC'S ADVERSE EFFECTS ON OUR ENVIRONMENT

## 1} Plastic pollute beaches & oceans

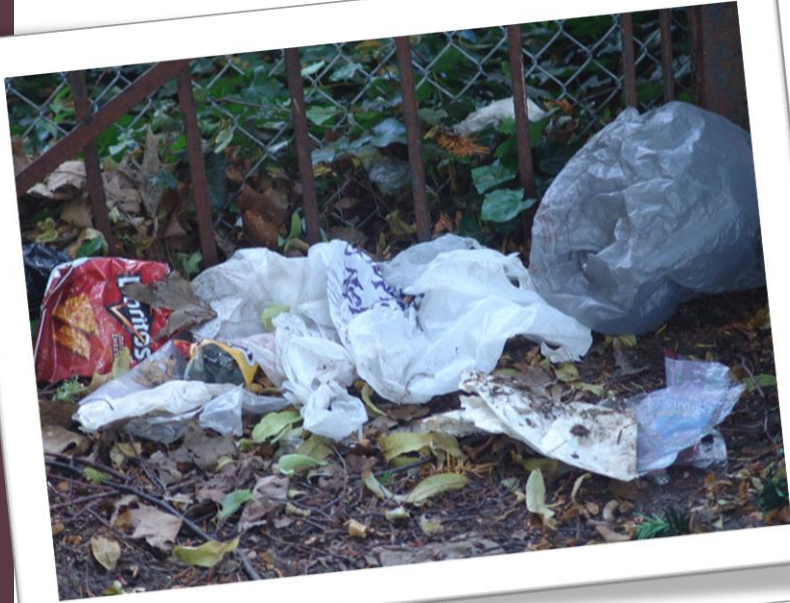
Garbage has been discarded into the oceans for as long as humans have sailed the seven seas or lived on seashores or near waterways flowing into the sea. Since the 1940s, plastic use has increased dramatically, resulting in a huge quantity of nearly indestructible, lightweight material

floating in the oceans and

eventually deposited on  
beaches worldwide







## **2} Plastic bags litter the landscape**

Once they are used, most plastic bags go into landfill, or rubbish tips. Each year more and more plastic bags are ending up littering the environment. Once they become litter, plastic bags find their way into our waterways, parks, beaches, and streets. And, if they are burned, they infuse the air with toxic fumes.







### ***3} Plastic bags kill animals***

**About 100,000 animals such as dolphins, turtles, whales, penguins are killed every year due to plastic bags. Many animals ingest plastic bags, mistaking them for food, and therefore die. And worse, the ingested plastic bag remains intact even after the death and decomposition of the animal. Thus, it lies around in the landscape where another victim may ingest it.**





## 4} Plastic bags are non-biodegradable

And one of the worst environmental effects of plastic bags is that they are non-biodegradable. The decomposition of plastic bags takes about 1000 years.



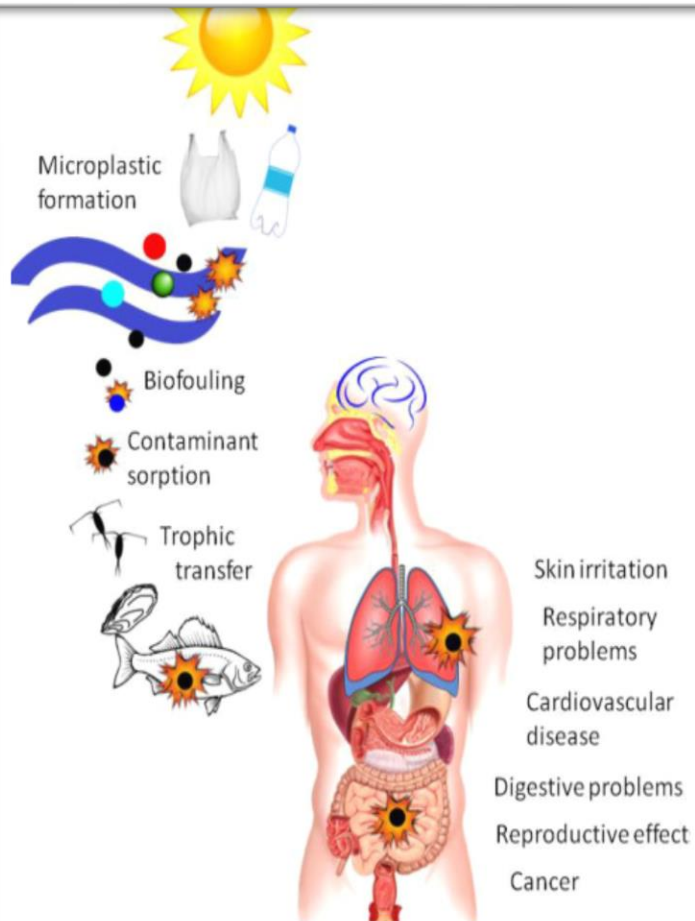


# **PLASTIC'S EFFECT ON HUMAN LIFE**

- Plastic plays the villain right from the stage of its production. The major chemicals that go into the making of plastic are highly toxic and pose serious threat to living beings of all species on earth.
- Some of the constituents of plastic such as benzene are known to cause cancer. Plastic resins themselves are flammable and have contributed considerably to several accidents worldwide.







- Once plastic is produced, the harm is done once and for all. Plastic defies any kind of attempt at disposal – be it through recycling, burning, or landfilling.
- When you recycle a hazard, you create a hazard.
- Recycling of plastic is associated with skin and respiratory problems, resulting from exposure to and inhalation of toxic fumes, especially hydrocarbons and residues released during the process.

